



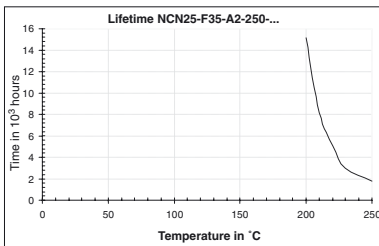
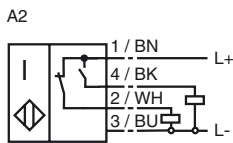
Model Number

NCN25-F35-A2-250-V1

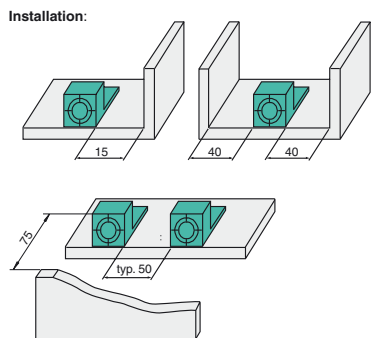
Features

- Comfort series
- 25 mm embeddable mountable
- Extreme additional temperature range of sensor component, 0 ... 250 °C
- 10 m cable between sensor and amplifier with metal case
- Appropriate for conveyor chains
- Minimum bending radius of 30 cm for movable laying

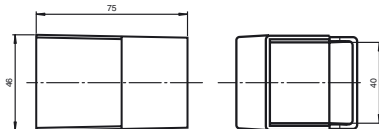
Connection



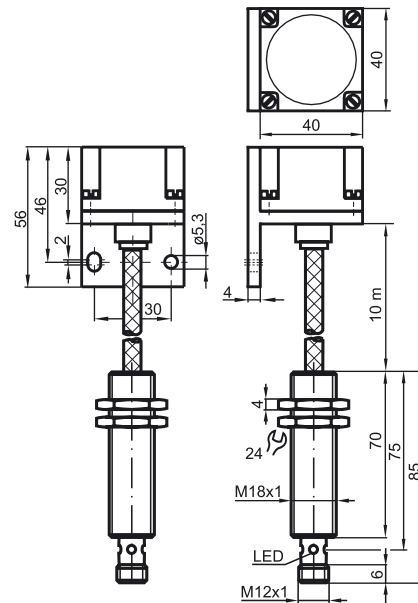
Release date: 2008-01-15 12:40 Date of issue: 2008-09-05 187479_ENG.xml



Accessories:
Protective Cover SH-F35



Dimensions



Technical Data

General specifications

Switching element function	PNP	Antivalent
Rated operating distance	s_n	25 mm
Installation	embeddable	
Output polarity	DC	
Assured operating distance	s_a	0 ... 20 mm
Reduction factor r_{AI}	0.5	
Reduction factor r_{Cu}	0.5	
Reduction factor r_{V2A}	0.6 ... 1	
Mounting angle	AI	
Amplifier housing	Stainless steel	

Nominal ratings

Operating voltage	U_B	10 ... 30 V
Switching frequency	f	0 ... 20 Hz
Hysteresis	H	0.3 ... 5 typ. 2 %
Reverse polarity protection	protected against reverse polarity	
Short-circuit protection	pulsing	
Voltage drop	U_d	≤ 3 V
Operating current	I_L	0 ... 200 mA
No-load supply current	I_0	≤ 25 mA
Indication of the switching state	Multihole-LED, yellow	

Standard conformity

Standards	IEC / EN 60947-5-2:2004
-----------	-------------------------

Ambient conditions

Ambient temperature	0 ... 250 °C (273 ... 523 K)
---------------------	------------------------------

Mechanical specifications

Connection type	V1-connector
Cable version	PFA cable, with armour of stainless steel
Core cross-section	3 x 0.34 , screened
Housing material	PTFE / AI / V2A
Sensing face	PTFE (Teflon)
Protection degree	amplifier IP67 sensor IP40

Note
 - amplifier 0 °C ... 70 °C
 - r_{V2A} dep. on thickness of measurement plate d:
 $r_{V2A} = 1$ for $d < 1$ mm
 Additional accessory: Protective cover SH-F35 is available for use in areas where there is moisture and as a means of mechanical protection.

Approvals and certificates

UL approval	cULus Listed, General Purpose Class 2 power source
-------------	--